

MSLHOXSP | MSLHEXSP – DRUVA®PUR MANIFOLD

MANIFOLD | PURE LINE (STAINLESS STEEL) | 20 m³ SERIES | HIGH PRESSURE RANGE

SINGLE STAGE | PROCESS GAS PURGING



This manifold is used in gas supply systems for pure, inert, flammable, oxidising, corrosive and / or toxic gases and their mixtures up to gas purity 6.0.



Type MSLHOXSP00
P0 HP Purge Valve
0 Without Specials



Type MSLHOXSP0U
P0 HP Purge Valve
U Specials
Check Valve &
Safety Valve



Type MSLHOXSPSU
PS HP Purge Valve &
LP Shut-off Valve
U Specials
Check Valve &
Safety Valve

TECHNICAL SPECIFICATION

- > Manifold for one gas cylinder or bundle
- > Regulator and Valves – Hastelloy/Elgiloy diaphragm tightening system to atmosphere
- > Compact design
- > Excellent pressure adjustment
- > Relief valve in delivery pressure side
- > Manifold with purge valve for process gas purging
- > Available with shut-off valve at outlet, safety valve at outlet, check valve at inlet

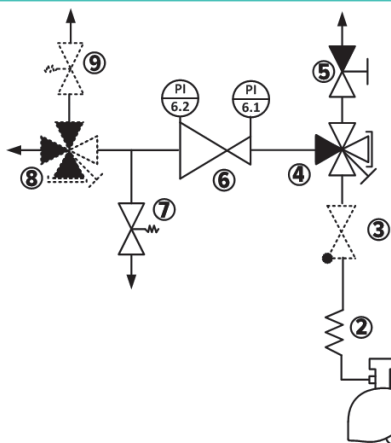
TECHNICAL DATA – MANIFOLD	
Working temperature:	-20 °C to +60 °C
Inlet/ outlet ports:	see technical drawing
Leakage rate seat:	$\leq 1 \times 10^{-6}$ mbar l/sec He
Leakage rate outside:	$\leq 1 \times 10^{-9}$ mbar l/sec He
Weight:	max 5,21 kg
Flow nominal:	20 m³/h (N₂) acc. to ISO 7291 at 20 bar outlet pressure and 41 bar inlet pressure
Pressure rates manifold:	
Max. inlet pressure:	300 bar
Delivery pressure:	3l 6l 10l 14l 28l 50l 100l 200 bar
For detailed information on tests and approvals during development and production of our TEC/PUR series see DATA-SpecGeneral-EN .	
For flow curves see DATA-FlowCurves-EN .	

TECHNICAL DATA - PRESSURE REGULATOR	
LSLHOSJ LSLHESJ see separate data sheet	
TECHNICAL DATA - SHUT-OFF VALVES	
VSLDESMAR 2 PORT VSLDSMIR – 4 PORT (3X INLET – 1X OUTLET) VSLDSMFR – 4 PORT (1X INLET – 3X OUTLET) see separate data sheets	

TECHNICAL DATA – PLATES	
Ground plate:	Stainless Steel (polished) Option to secure arrestor cable of hoses with hook on ground plate. Grounding bolt Cut outs on top and bottom allows installation
Dimensions ground plate: (Height x Width x Length)	194 x 30 x 230 mm
Front plate:	Stainless Steel (polished) Cut outs for easy replacement of gauges Free space for additional installer label (e.g. remark for next maintenance)
Dimensions front plate: (Height x Width x Length)	194 x 30 x 230 mm
Marking on panel:	Product range label QR-Code – link to online product configurator

TECHNICAL DATA – SAFETY VALVES (S)	
	Spring loaded according P.E.D. 2014/68/EU and AD2000 (A2)
Opening pressure:	4,5/ 6/ 9/ 15/ 21/ 28 bar
Leakage rate:	$\leq 1 \times 10^{-6}$ mbar l/s (valve seat) at nominal pressure of receiver
Material:	Housing and metal parts made of stainless steel, pressure spring made of stainless steel
Seat and seal:	FKM/ EPDM
Outlet connection:	NPT ½" female

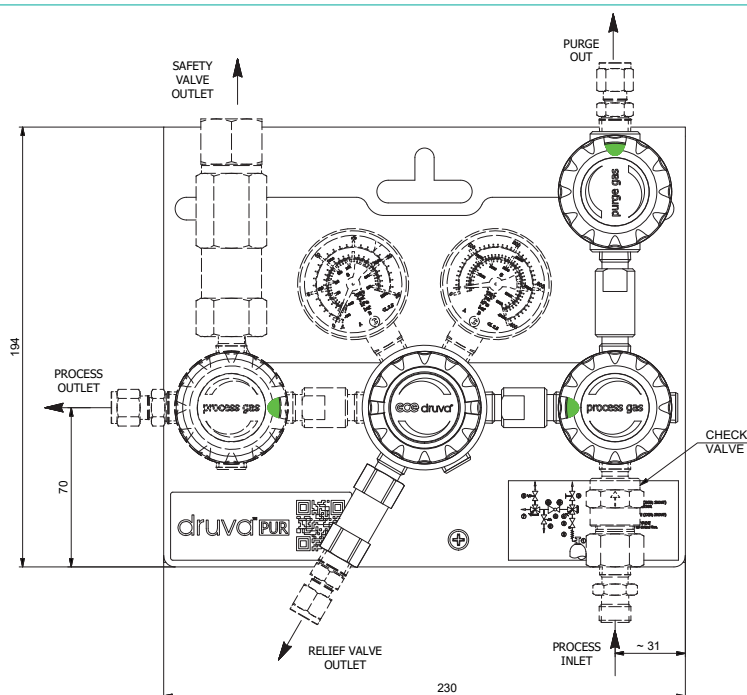
FLOW SCHEMATIC



- 1 – Gas cylinder
- 2 – Coil/Hose
- 3 – Check valve
- 4 – Shut-off valve (3xin, 1xout)
- 5 – Purge outlet valve
- 6 – Pressure Regulator
- 7 – Relief valve
- 8 – Shut-off valve (1xin, 3xout)
- 9 – Safety valve

Options & specials are shown as dotted line

TECHNICAL DRAWING



Outlet-, purge- and relief valve connections

- N14F - NPT1/4" female
- M03S - Compression Fitting ø 3 MM Stainless Steel
- M06S - Compression Fitting ø 6 MM Stainless Steel
- M08S - Compression Fitting ø 8 MM Stainless Steel
- M10S - Compression Fitting ø 10 MM Stainless Steel
- M12S - Compression Fitting ø 12 MM Stainless Steel
- IX2S - Compression Fitting ø 1/8" Stainless Steel
- IX4S - Compression Fitting ø 1/4" Stainless Steel
- IX6S - Compression Fitting ø 3/8" Stainless Steel
- IX8S - Compression Fitting ø 1/2" Stainless Steel

ORDER CODE

Example Manifold | PUR Line | Stainless Steel | Low Flow | Single Stage | Process Gas Purging

MSLH0X MSLHEX	S	P0	C	FX	F2	BT	BT	N14F	N14F (1/4" NPT female)	N14F (1/4" NPT female)
	Stages	Options	Specials	Inlet pressure (bar)	Outlet pressure (bar)	Inlet pressure gauge	Outlet pressure gauge	Process inlet connection	Process outlet connection	Purge & relief connection
	S Single stage	P0 HP purge valve	0 without	F4 60	BX 3	BT Bourdon Tube gauge	BT Bourdon Tube gauge	N14F 1/4" NPT female	possible connections see technical drawing	possible connections see technical drawing
		PS HP purge valve LP Shut-off valve	C Check valve	FX 200*	CX 6	I1 Inductive contact gauge I1	I2 Inductive contact gauge I2 **	M14M Metrisch 14x1.5 male		
			S Safety valve	GX 300	D2 10	R5 Reed contact gauge R5	R2 Reed contact gauge R2 **			
			U Check valve + safety valve		DX 14		I1 Inductive contact gauge I1			
					EY 28					
					EX 50					
					F2 100					
					FX 200*					

* Inlet and outlet pressure 200 bar not available with pressure relief valve (PRV) | ** Only for outlet pressure 200 bar

Order code (as described above) without special characters or spaces! Complete Order Code **MSLH0XSP0CFXF2BTBTN14FN14FN14F**



Link to online product configurator